

SonoScape

X10

Advanced Portable Ultrasound System



SMART IMAGING FOR ALL NEEDS

SonoScape

SonoScape Medical Corp.

2F, 12th Building, Shenzhen Software Park Phase II, Keji Middle 2nd Road,
Nanshan District, Shenzhen 518057, Guangdong, China
Tel: +86-755-26722890 Fax: +86-755-26722850
Email: market@sonoscape.net www.sonoscape.com

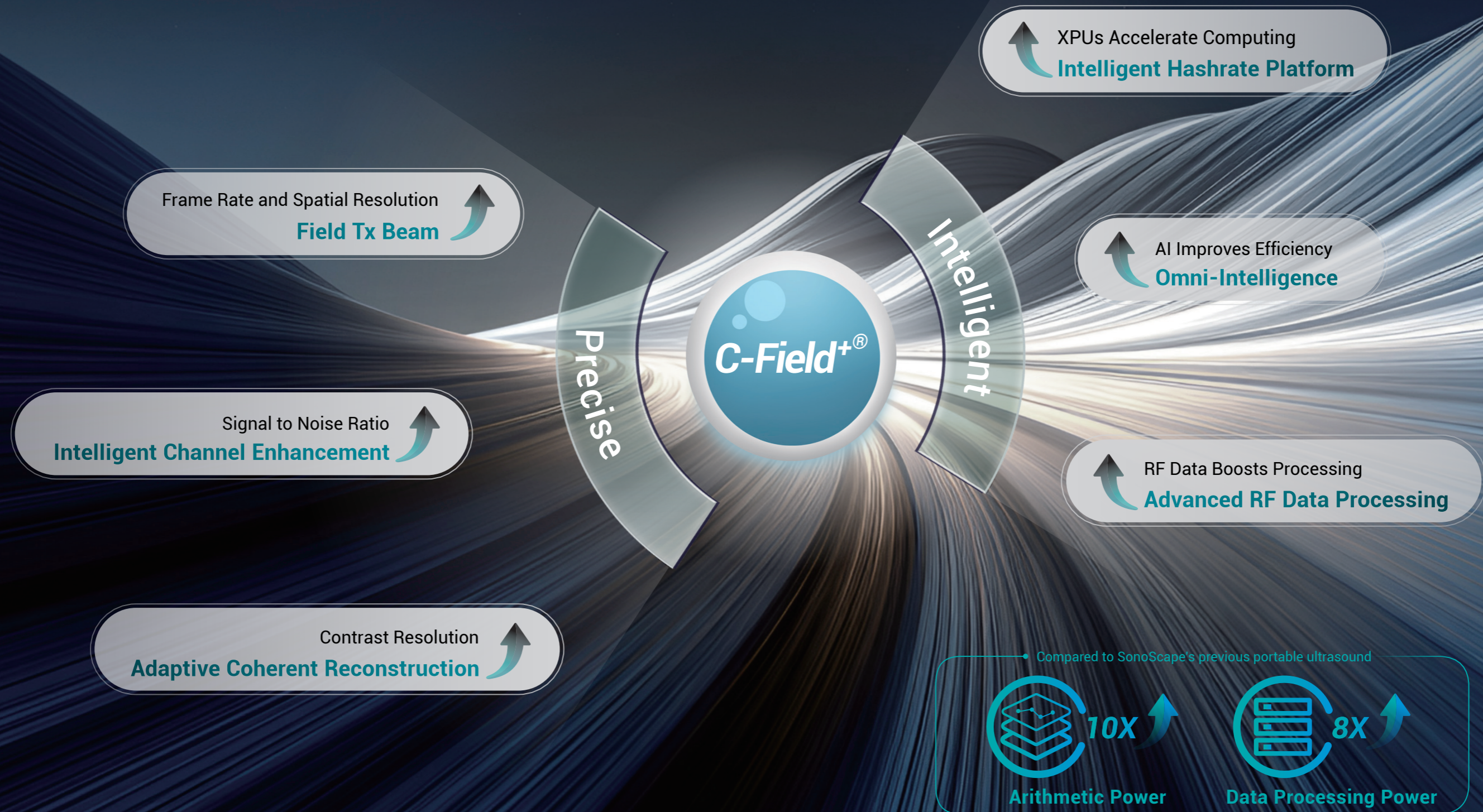
© 2025 SonoScape Medical Corp.
All rights are reserved.

SonoScape Medical reserves the right to change the
above information and discontinue any product at any
time without prior notification and will not be liable for any
consequences resulting from the use of this publication.

U-X1020250711

C-Field+[®] Platform

The X10, which serves as SonoScape's high-end portable ultrasound based on the C-Field+[®] platform, comes equipped with the industry's premier technology and advanced functions. It empowers clinicians across multiple specialties with expanded diagnostic capabilities in general imaging.



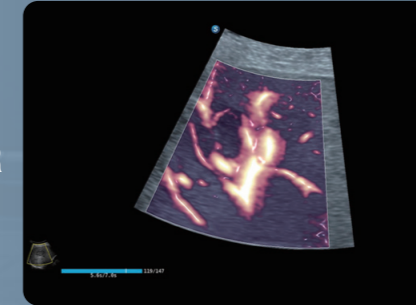
X10

As a versatile core solution in SonoScape's portable ultrasound portfolio, the X10 integrates sophisticated technology with essential clinical functions. It supports efficient examination workflows across diverse settings, empowering medical professionals to deliver confident diagnoses within fundamental care environments.



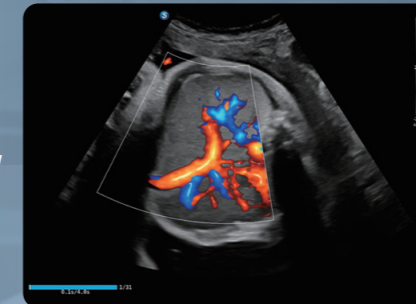
Flow Revealed, Details Defined

FHR



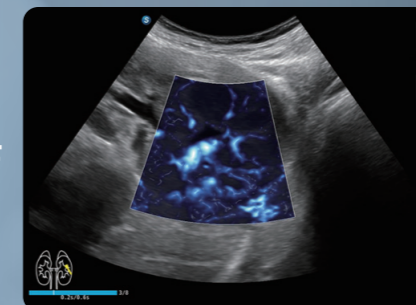
FHR enables observation of microvascular perfusion into organs with high frame rates, elevated sensitivity, and superior resolution through refined scanning methodologies and algorithms. Its innovative respiratory motion compensation ensures accurate depiction of low-velocity blood flow for more realistic hemodynamics.

Bright Flow



Bright Flow provides 3D-like Color Doppler flow visualization without requiring a volumetric transducer, thereby enhancing the definition of the vessel wall boundary.

Micro F



Micro F efficiently distinguishes subtle blood flow signals from overlaying tissue motion, enabling enhanced sensitivity and spatial resolution in hemodynamic depiction.

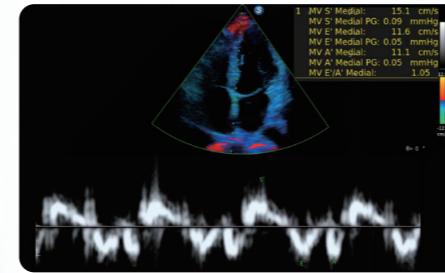
Radiology

OB&GYN

Essential Access, Steady Performance

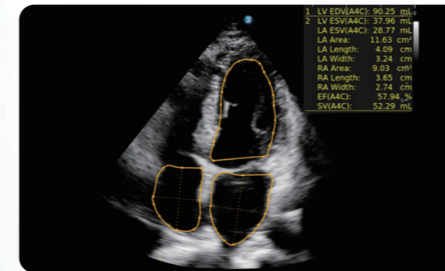
Cardiology

Specialty



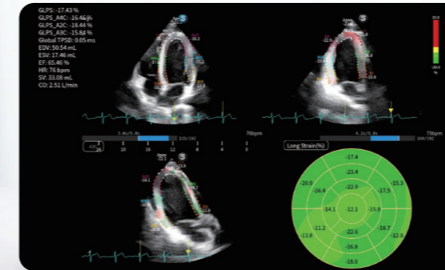
S-CV (PW&M)

Provides intelligent, real-time spectral Doppler measurement during live scanning. Automatically identifies cardiac views, positions sample volume and calculates measurements - all with minimal user intervention for efficient workflow.



S-CV (2D meas.)

Delivers one-click 2D cardiac measurement on frozen images. With a single click, it intelligently analyzes cardiac structures, performs comprehensive measurements (dimensions, areas, and functional indices like EF).



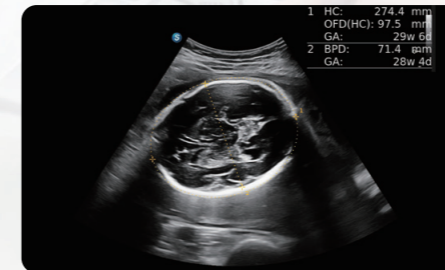
MQA

MQA supports the analysis of myocardial motion across multiple views, and generates analysis curves for parameters including strain, strain rate, velocity, displacement, etc.



3D/4D Imaging

3D/4D imaging delivers clear fetal visualization, supporting accurate anatomical assessment, growth monitoring, and evidence-based clinical decision-making throughout pregnancy.



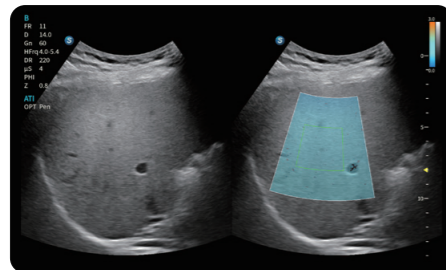
Auto OB

The automatic measurement of fetal biparietal diameter, head circumference, abdominal circumference, and humerus length effectively decreases the number of keystrokes, thereby saving doctors' valuable working time.



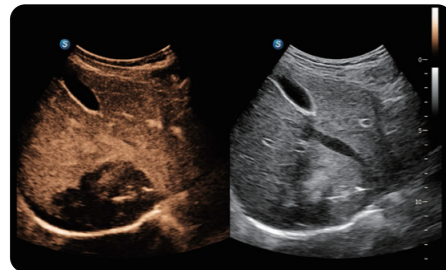
Auto NT

The Auto NT function has the remarkable ability to automatically identify the nuchal translucency of the fetus and precisely measure its maximum diameter. This empowers doctors to efficiently screen for potential chromosomal abnormalities and ensure proper prenatal care.



ATI

ATI (Acoustic Attenuation Imaging) enables quantitative assessment of liver steatosis by measuring the attenuation coefficient, assisting clinicians in evaluating the degree of steatosis for a more reliable prognosis.

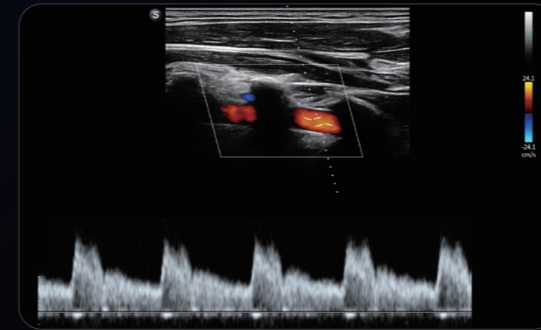


CEUS

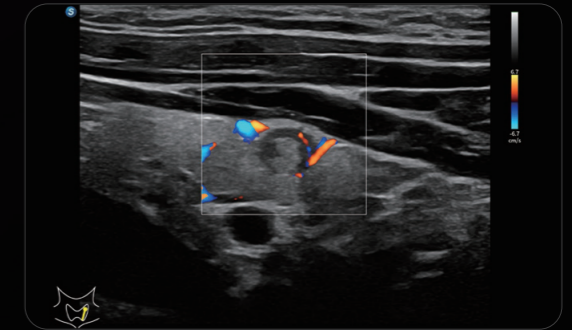
CEUS dynamically displays the perfusion process of lesions in detail. The combination of MFI, MF Time, and MFI Mix allows doctors to assess lesion perfusion from multiple perspectives, thereby enabling more precise and efficient diagnosis.



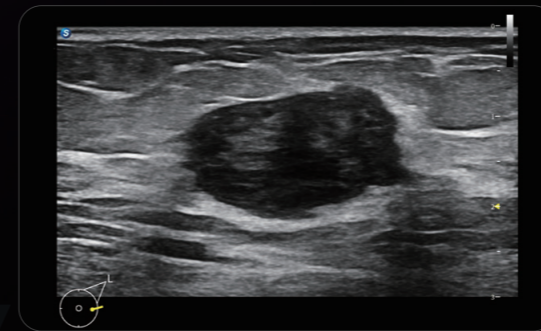
Image Gallery



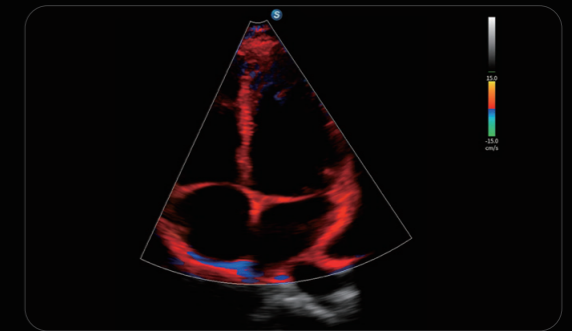
Vertebral Artery



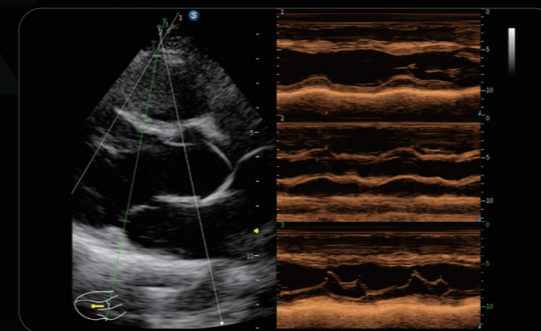
SR Flow of Papillary Thyroid Cancer



Intraductal Papilloma of the Breast



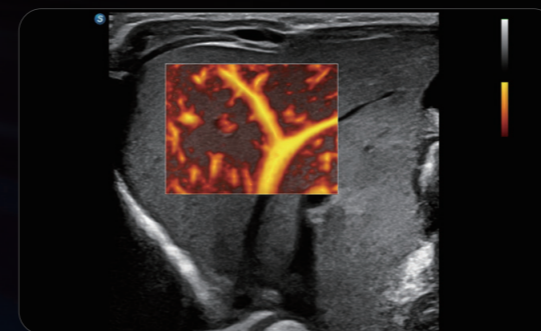
Cardiac TDI



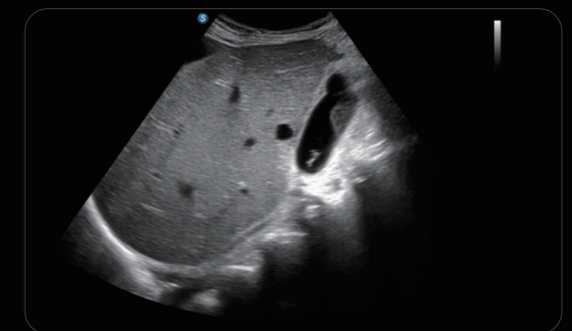
Cardiac AMM



Bright Flow of Hepatic Coronary Arteries Calcification



Micro F of Neonatal Liver



Gallstones

Elegant in Form, Potent in Performance



Triple Vision Wonders

Experience precision and clarity with the most cutting-edge triple vision setup!

- Innovative Display of Battery Status
- 12.3-inch LCD Touchscreen
- 15.6-inch LCD Monitor



Measure with Ease

The X10 boasts a trackball with adjustable sensitivity, facilitating doctors to carry out measurements more conveniently.



Expand Your Possibilities

Support 1 to 4 probe extender and unlock endless possibilities in ultrasound imaging!



Charge with A Click

The X10's magnetic charging port delivers effortless power-ups while protecting cables from long-term wear and tear.

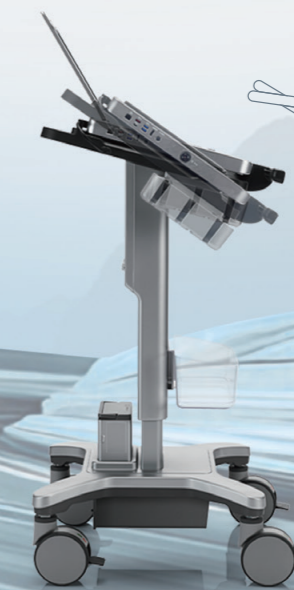


Charge Less, Scan More

The E-Pack delivers an additional runtime, extendable to **8 hours** when paired with trolley batteries-ensuring uninterrupted critical workflows.



1150mm
Height Customized
Comfort Maximized
830mm



15°
30°
Always Fit Your View